

[LG Electronics] Foreign Student Internship in 2017

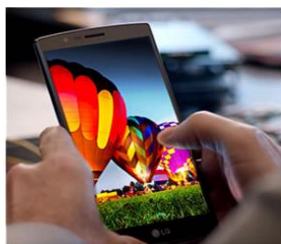
■ About LG

LG's innovative technologies, unique products, and cutting-edge designs are an investment in the future. LG comprises four business units - Home Entertainment, Mobile Communications, Home Appliance & Air Solution, and Vehicle Components - and is one of the world's leading producers of flat panel TVs, mobile devices, air conditioners, washing machines and refrigerators.



Home Appliance & Air Solution

Refrigerators, Washing machines, Dishwashers, Cooking appliances, Vacuum cleaners, Built-in appliances, Air conditioners, Air purifiers, Dehumidifiers



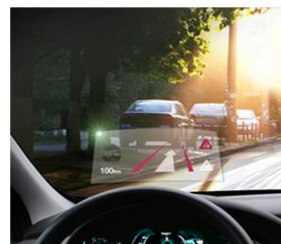
Mobile Communications

G Series, V Series, X Series, G Pad, LG Watch



Home Entertainment

TVs, Audio & Video, Monitors, PCs & Accessories, Commercial Products



Vehicle Components

In-Vehicle infotainment, HVAC & Motor, Vehicle Engineering

LG is devoted to bringing a better life for customers through new and beautifully-refined experiences. It will ultimately provide the best solutions for life. It's 'Innovation for a Better Life' that LG is aiming for.

LG Electronics was established in 1958 and has since led the way into the advanced digital era thanks to its technological expertise. LG Electronics has unveiled many new products, applied new technologies and continues to reinforce its status as a global company. Pioneering in technology through LG's innovative start and continuous growth, LG is becoming a faster and smarter global brand of the future.

LG Electronics plays an active role in world markets with its assertive global business policy. As a result, LG Electronics controls 119 local subsidiaries worldwide, with roughly 78,000 employees.

LG is looking for high talented people, passionate, energetic, and eager to contribute to our success together. With all our future technology and multiple business units all under 'one roof', we can offer unique, challenging growth opportunities.

[LG Electronics] Foreign Student Internship in 2017

1. Overview

-
- LGE is to recruit foreign students who study in universities in Korea as interns for key functions in HQ(Planning, Sales/Marketing, Engineering, SCM, Quality). At the completion of the internship, those who are deemed qualified will receive an offer as a Contract Employee (1 Year) at LGE.

2. Schedule

-
- ① Application: October 26 (Thu) – November 6 (Mon) 2017
 - ② Resume Screening and First Interview: by November
 - ③ Internship: 7 weeks (`18.1.8 ~ `18.2.23)
 - * Internship period can be changed in accordance with company requirements.
 - ④ Final interview: upon the completion of internship
 - ⑤ Join as a Contract Employee:
 - At the earliest convenience of individual interns (once the internship ends), depending on internship result.

3. Recruitment Fields and Major

-
- Planning, Sales/Marketing, Engineering, SCM, Quality
 - No specific major required

4. Qualification

-
- Foreign students who are currently at or recently graduated from Korean universities.
(Preference: those who will graduate in February 2018 and who are fluent in Korean.)

■ Where to Apply

- Application is only available on-line, at careers.lg.com (LG Group Recruitment Page).
 - ※ <http://careers.lg.com>
 - '[LG Electronics] Foreign Student Internship in 2017 (LG전자 2017년 한국유학생 인턴채용)'

■ Application Form must be written in English.

■ Inquiry

- Via LG Careers site, Recruitment Inquiry → 1:1 Inquiry

[LG전자] 2017 주한 외국인 유학생 인턴 채용

1. 운영 개요

- 한국 거주 외국인 유학생을 한국 주요 직무(영업/마케팅, SCM등)에 배치하여 인턴십을 통해 역량을 검증 후 우수 인원은 계약직(1년) 사원으로 채용하고자 합니다.

2. 선발 일정

- ① 모집 : `17년 10월 26일(목) ~ 11월 6일(월)
- ② 서류전형 및 1차 면접 : ~11월 중
- ③ 인턴 : 7주간 (`18.1.8 ~ `18.2.23)
*인턴기간은 회사 사정에 따라 변경될 수 있음.
- ④ 최종 면접 : 인턴 종료 시
- ⑤ 입사(계약직) : 인턴 종료 후 개인별 상황에 따름

3. 채용분야 및 전공

- 채용분야 : 기획, 해외 Marketing/Sales, 엔지니어링, SCM, 품질
- 전공 무관

4. 지원 자격

- 한국에서 학사 혹은 석사 과정 이수를 위해 재학 중인 외국인 유학생 또는 졸업자
(`18년 2월 졸업예정자 및 한국어 가능자 우대)

■ 지원방법

- 반드시 LG그룹 채용사이트(careers.lg.com)을 통한 온라인 지원만 가능
※<http://careers.lg.com>
→ '[LG Electronics] Foreign Student Internship in 2017 (LG전자 2017년 한국유학생 인턴채용)'

■ 지원서 상 자기소개서는 반드시 영어로 작성해 주시기 바랍니다.

■ 문의처

- LG Careers 사이트 내 "채용문의" → "1:1질문하기"